



# Next Day PCR COVID-19 Testing Results

For All Symptomatic & Directly Exposed Bexar County School Faculty, Staff, and Students

## **FAST FACTS:**

No out of pocket expense for faculty, staff, and students of any school.

- Household Family members are eligible upon student, faculty, or staff obtaining positive test results.
- PCR Testing is the most accurate and reliable COVID test with next day results.
- Convenient testing locations across Bexar County:
  - Fixed Testing Locations
  - Rotating Mobile Unit Locations

## **SCHEDULES ON REVERSE SIDE**

For more details, visit our official website at [ConCorazonSA.org](https://ConCorazonSA.org)

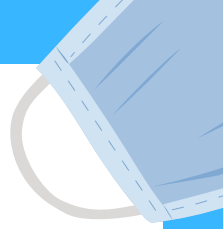
For inquiries, contact Anyssa Robles at (210) 851-8621 or [Anyssa@staampallergy.com](mailto:Anyssa@staampallergy.com).

STAAMP



SOUTH TEXAS  
**Allergy & Asthma**  
MEDICAL PROFESSIONALS

# Next-Day Results! COVID Testing



## Mobile Unit Schedule Starting January 11

<b>Monday</b>	Olmos Basin- Alamo Heights Little League 651 Devine Road, San Antonio 78209 8:30 a.m. to 3:30 p.m.
<b>Tuesday</b>	McAuliffe Middle School (SWISD) 9390 SW Loop 410, San Antonio, 78242 8:30 a.m. to 3:30 p.m.
<b>Wednesday</b>	Alamo Stadium 110 Tuleta Drive, San Antonio 78212 8:30 a.m. to 3:30 p.m.
<b>Thursday</b>	Bexar County ESD #11 4511 Texas Palm Drive, Converse, 78109 8:30 a.m. to 3:30 p.m.
<b>Friday</b>	TBD
<b>Saturday</b>	Northside ISD Stadium 7001 Culebra Road, San Antonio 78238 8:30 a.m. to 3:30 p.m.

## Fixed Testing Site Schedule

<b>Central SA</b>	STAAMP Allergy Olmos Park Site 341 E. Hildrebrand, San Antonio 78212 8 a.m. to 3 p.m.
<b>NW SA</b>	STAAMP Allergy Westover Hills Site 10447 State HWY 151, San Antonio 78251 8 a.m. to 3 p.m.



For more details, visit our official website at [ConCorazonSA.org](https://ConCorazonSA.org)  
For inquiries, contact Anyssa Robles at (210) 851-8621.